



คณะเภสัชศาสตร์
FACULTY OF PHARMACEUTICAL SCIENCES
Chulalongkorn University

Graduate Program



GRADUATE PROGRAM

- **Obtained Bachelor Degree in Pharmacy**



**INDUSTRIAL
PHARMACY**



**PHARMACEUTICAL
CARE**



**PHARMACOLOGY
AND TOXICOLOGY**

- **Obtained Bachelor Degree in Pharmacy, Science and related fields**



**SOCIAL AND
ADMINISTRATIVE
PHARMACY**



**PHARMACEUTICAL
SCIENCES AND
TECHNOLOGY**



**Research for
Enterprise**

Examination & Interview: contact program

*Master's Degree: 1-3 years
Doctoral Degree: 3-5 years*

*Curriculum : coursework
non-coursework*

*Scholarship : C2F, Asean & Non-
Asean, Chula Grad*

**Graduate Program
Brochure**



Scan for Brochure

Graduate Prospectus

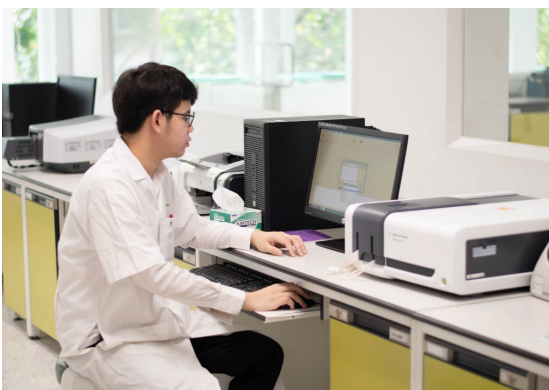


Scan for Booklet



คณะเภสัชศาสตร์ FACULTY OF PHARMACEUTICAL SCIENCES Chulalongkorn University

We currently have about 300 graduate students mixing in a good balance between Thai and international students



**Graduate Program
Brochure**



Scan for Brochure

Graduate Prospectus



Scan for Booklet

**CAREER PATH: Pharmacist, Researcher, Academia / Lecturer,
Research and Development Specialist, Entrepreneur**

DEPARTMENT



Social and Administrative Pharmacy



Pharmaceutics and Industrial Pharmacy



Pharmacy Practice



Food and Pharmaceutical Chemistry



Pharmacology and Physiology



Pharmacognosy and Pharmaceutical Botany



Biochemistry and Microbiology



Faculty Member



Admission details

RESEARCH



CLINICAL AND
PATIENT CARE



DRUG DELIVERY



DRUG DISCOVERY



DRUG DEVELOPMENT



DRUG ACTION



SOCIAL AND
ADMINISTRATIVE
PHARMACY

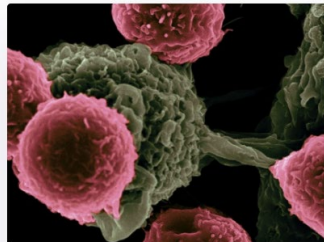
RESEARCH UNIT



Chula Cannabis and its Natural
Substances (Chula CANS) Research
Cluster



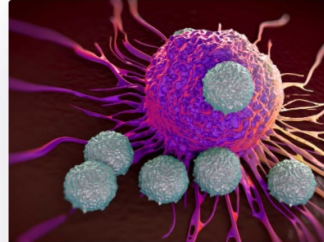
Assoc. Prof. Soranakorn
Vimolmangkang, PhD, RPh
Key Contact Person



DNA Barcoding of Thai Medicinal
Plants Research Unit



Assoc. Prof. Suchada Sukrong,
Ph.D.
Key Contact Person



Drug Discovery and Drug
Development Research Center
(Chula4DR)



Chula4DR
Contact



Research Unit for Plant-produced
Pharmaceuticals



Assoc. Prof. Waranyoo
Phoolcharoen
Key Contact Person

INNOVATION AND ENTREPRENEURS



CU Pharmacy Enterprise

Health innovation ecosystem and
entrepreneurship platform



Protein expression platform to
produce recombinant molecular
protein



Nanopolymer applications for
health products



Combined Thai herbal wisdom
and pharmaceutical technology
for herbal innovation products



www.pharm.chula.ac.th



facebook.com/PharmCUGrad



pharmacugrad@pharm.chula.ac.th

LEARNING FACILITIES



CLASS ROOM
ห้องเรียน



LIBRARY
ห้องสมุด



INDIVIDUAL STUDY / MEETING ROOM
ห้องเรียนส่วนบุคคล / ห้องประชุมกลุ่ม



COMPUTER ROOM
ห้องคอมพิวเตอร์

STUDENT LIFE

IN-CLASS LEARNING



RESEARCH DISCUSSION



CULTURAL EXCHANGE



SEMINAR



INTERNATIONAL COMMUNITY



RECREATION CENTER



Scholarship and Research Funding

- SCHOLARSHIPS
- RESEARCH FUNDING
- TEACHING AND RESEARCH ASSISTANTSHIPS
- RESEARCH ABOARD FUNDING
- OVERSEAS THESIS PRESENTATION FUNDING

Graduate Scholarship Programme
for ASEAN or Non – ASEAN Countries

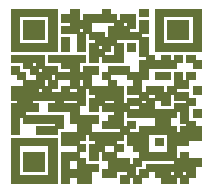
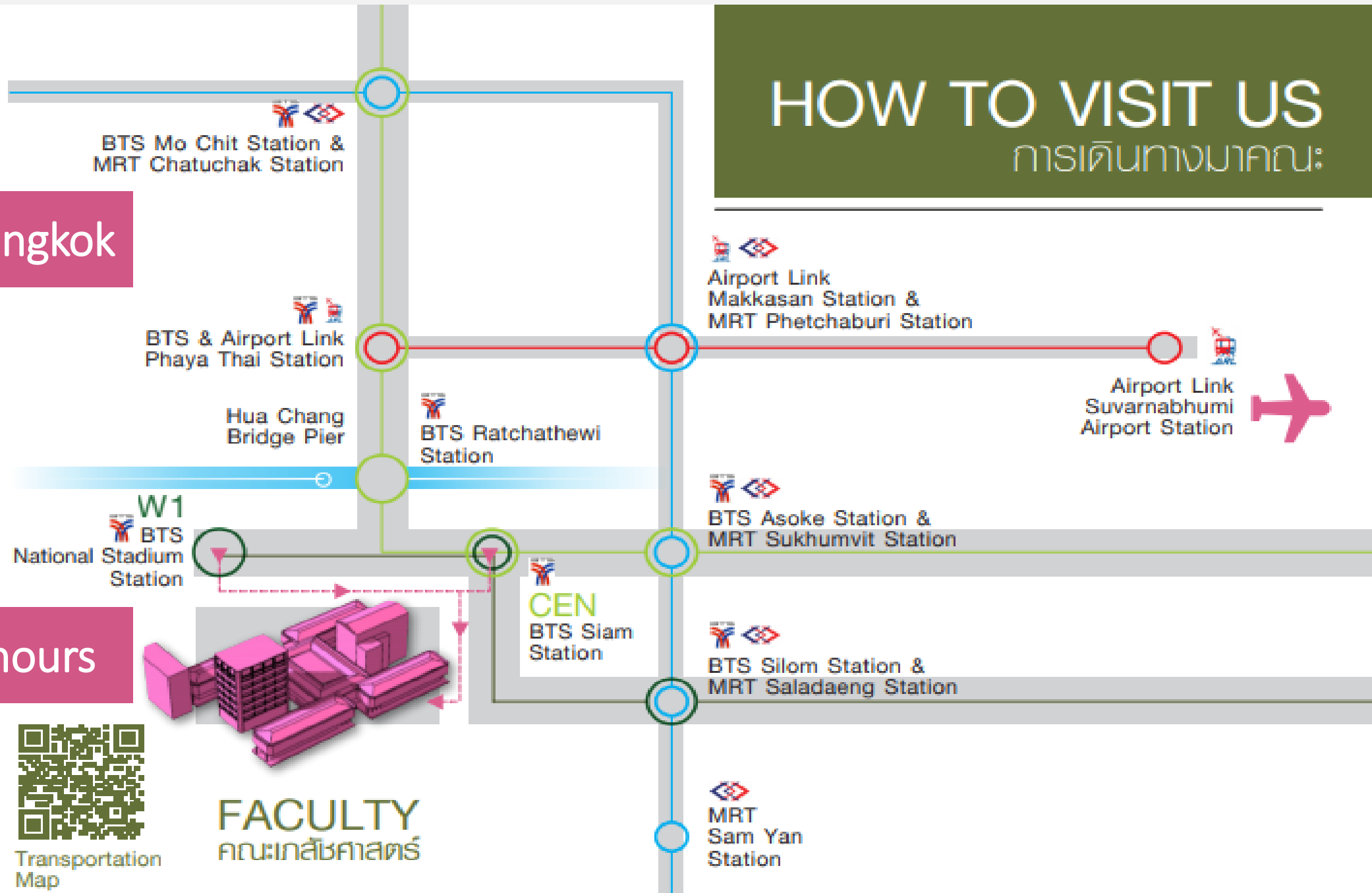


HOW TO VISIT US

การเดินทางมาคณะ:

Central Bangkok

About 1 hours



Transportation Map



คณะเภสัชศาสตร์

FACULTY OF PHARMACEUTICAL SCIENCES

Chulalongkorn University

GRADUATE STUDY AND RESEARCH

Admission

1st February - 31st May 2024



Admission
details



Contact us
[facebook.com/
PharmCUGrad](https://facebook.com/PharmCUGrad)